

PROSPECTUS



2024-2025

Welcome To Stoke Park School



Dear Parent and Carer,

Welcome to Stoke Park School and the brighter future we offer your son or daughter. I know how important it is for parents when choosing a secondary school for your child, it is one of the most important and daunting decisions you will make. I hope that the contents of this prospectus will give you a real sense of the values we have here at Stoke Park; how we place our students first, focus relentlessly on teaching and learning and work hard to remove barriers to each and every student's success.

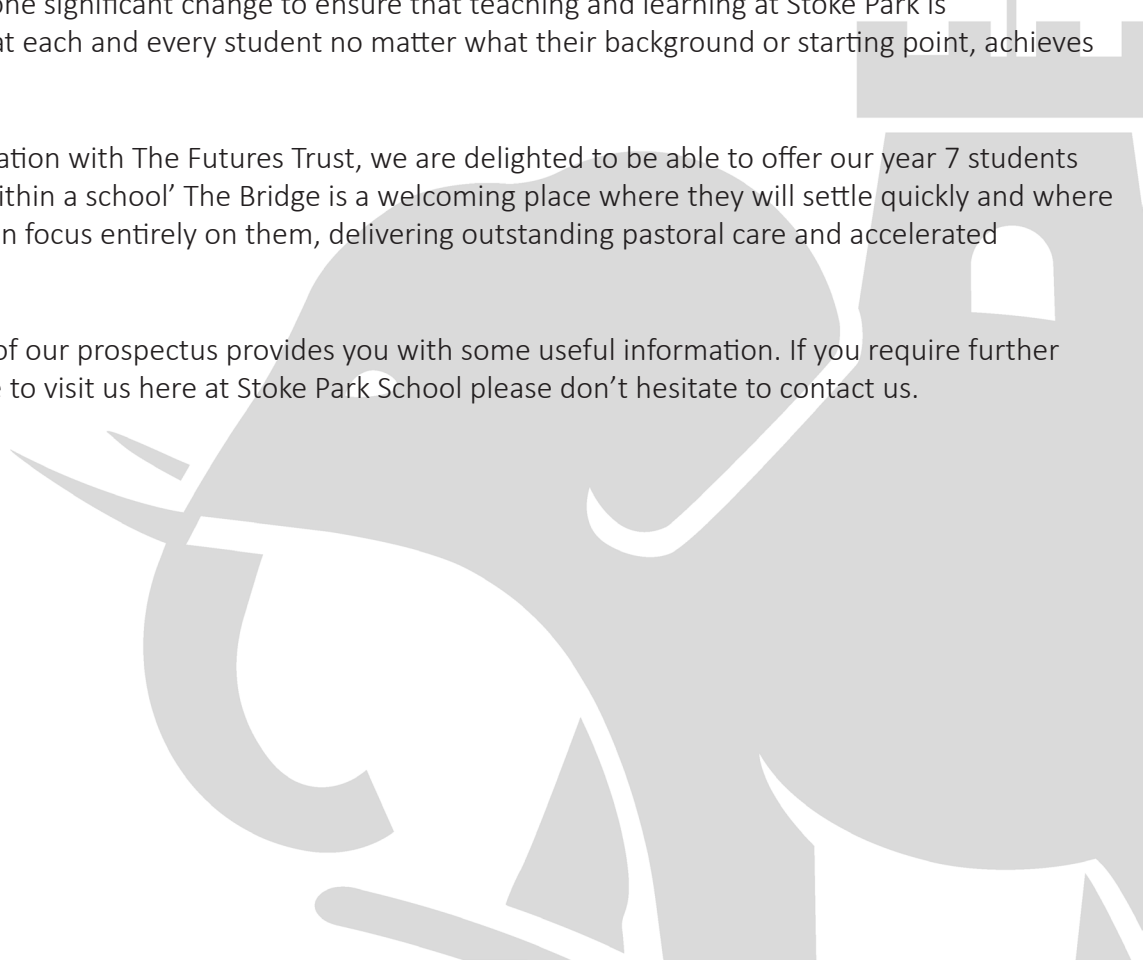
Students who attend Stoke Park School are clear about what is expected of them and take pride in their appearance and conduct. They are inspired to be successful, encouraged to achieve great things and above all to believe in themselves. Their success is celebrated at every opportunity as they take each step on their journey to becoming responsible citizens and future leaders in society.

Stoke Park school was inspected by Ofsted in April 2022, and is officially 'Good' in all areas. This is an exciting time for Stoke Park School' and with its distinguished history as one of Coventry's leading providers of high-quality secondary education. Building on the immense strength of Stoke Park School, we are a forward-thinking community and confident about the future of the school and all its learners. Stoke Park School joined The Futures Trust, a family of local primary and secondary schools in 2017. Since then the school has undergone significant change to ensure that teaching and learning at Stoke Park is outstanding and that each and every student no matter what their background or starting point, achieves their true potential.

Working in collaboration with The Futures Trust, we are delighted to be able to offer our year 7 students their own 'school within a school' The Bridge is a welcoming place where they will settle quickly and where The Bridge's staff can focus entirely on them, delivering outstanding pastoral care and accelerated academic progress.

I hope the content of our prospectus provides you with some useful information. If you require further details or would like to visit us here at Stoke Park School please don't hesitate to contact us.

Miss Rock
Head Teacher

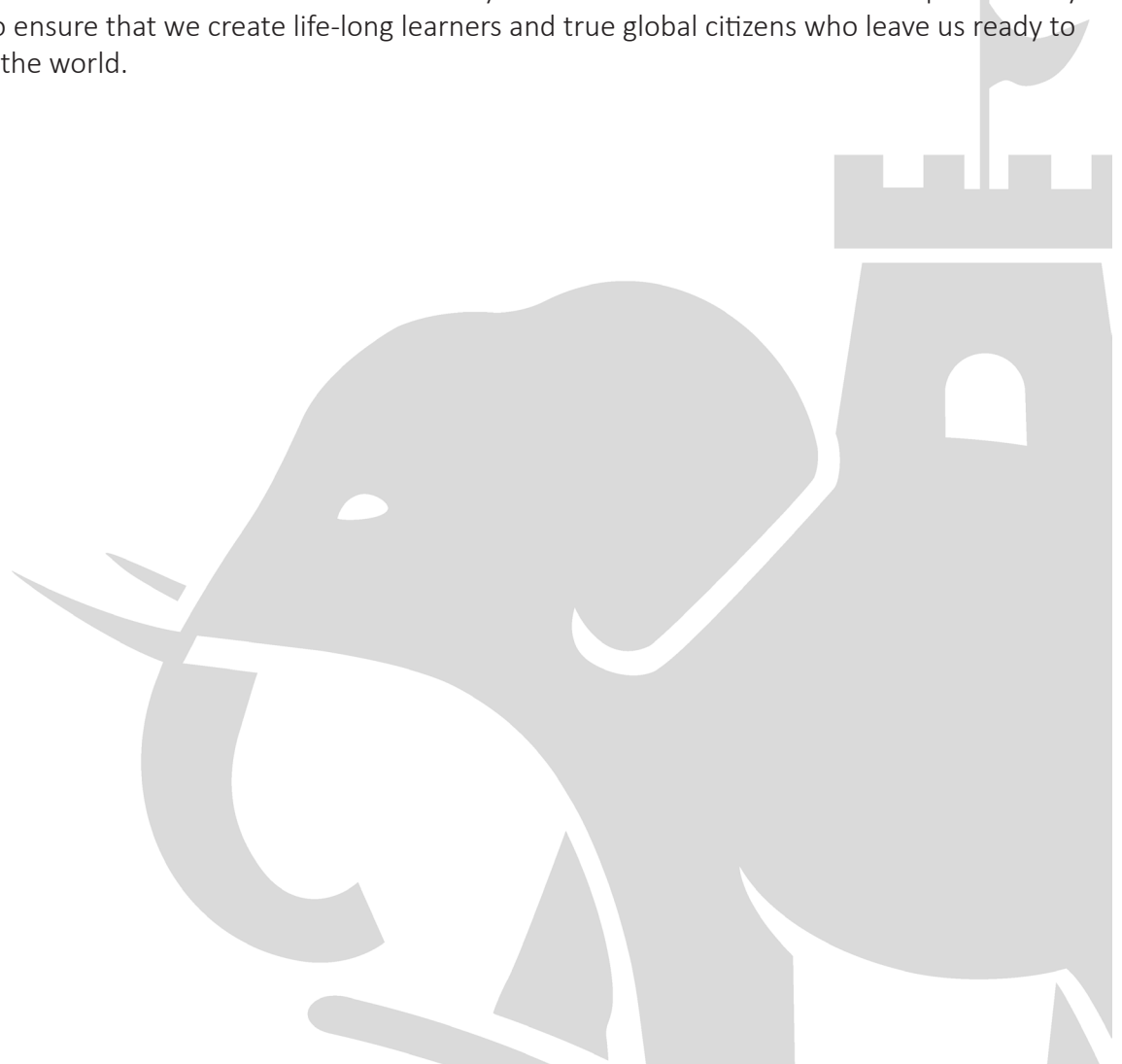


The Stoke Park Experience, Student Leadership and the Super Curricular

At Stoke Park School, we offer our students an outstanding Seven Year Journey, comprised of the best possible experiences both inside and outside the classroom. Our ethos of Students First, It's About Learning and No Barriers guarantees that every child has opportunities that expand their horizons and fosters a true love of learning.

Secondary school is a vitally important phase in a students' life and our curriculum ensures that our students actively participate in their learning, giving them the leadership skills necessary to compete at a national and international level. Through enrichment and super curricular experiences, Stoke Park guarantees that all students, whether they are at the start of their journey in Year 7 or nearing their end of their time with us in Year 13 have opportunities to expand their knowledge and the way that they think. All students are given chances across every discipline to expand their knowledge and challenge the way that they think.

In turn, this helps build our students' confidence and gives them the opportunity to meet new people and try new things. Each subject across all of our year groups and key stages has a number of experiences that link directly to their curricula and to enthuse them to always want to know more. We believe passionately that it is our duty to ensure that we create life-long learners and true global citizens who leave us ready to make their mark in the world.



Character



STOKE PARK
— SCHOOL —

Competition

Seven Year Journey

THE
Orator



YEAR
7

THE
Philosopher



YEAR
8

THE
Revolutionary



YEAR
9

THE
Inventor



YEAR
10

THE
Architect



YEAR
11

THE
Scholar



POST
16

Culture

Care

P.R.I.D.E

Pride
Respect
Independence
Determination
Excellence

Stoke Park School

Seven Year Journey

Our Seven Year Journey for a Stoke Park student charts the journey we take our students on, in order to develop their character and learning attributes. This helps our students to break through the 'class ceiling' and achieve equity of opportunity and experience in both their time at school and beyond.

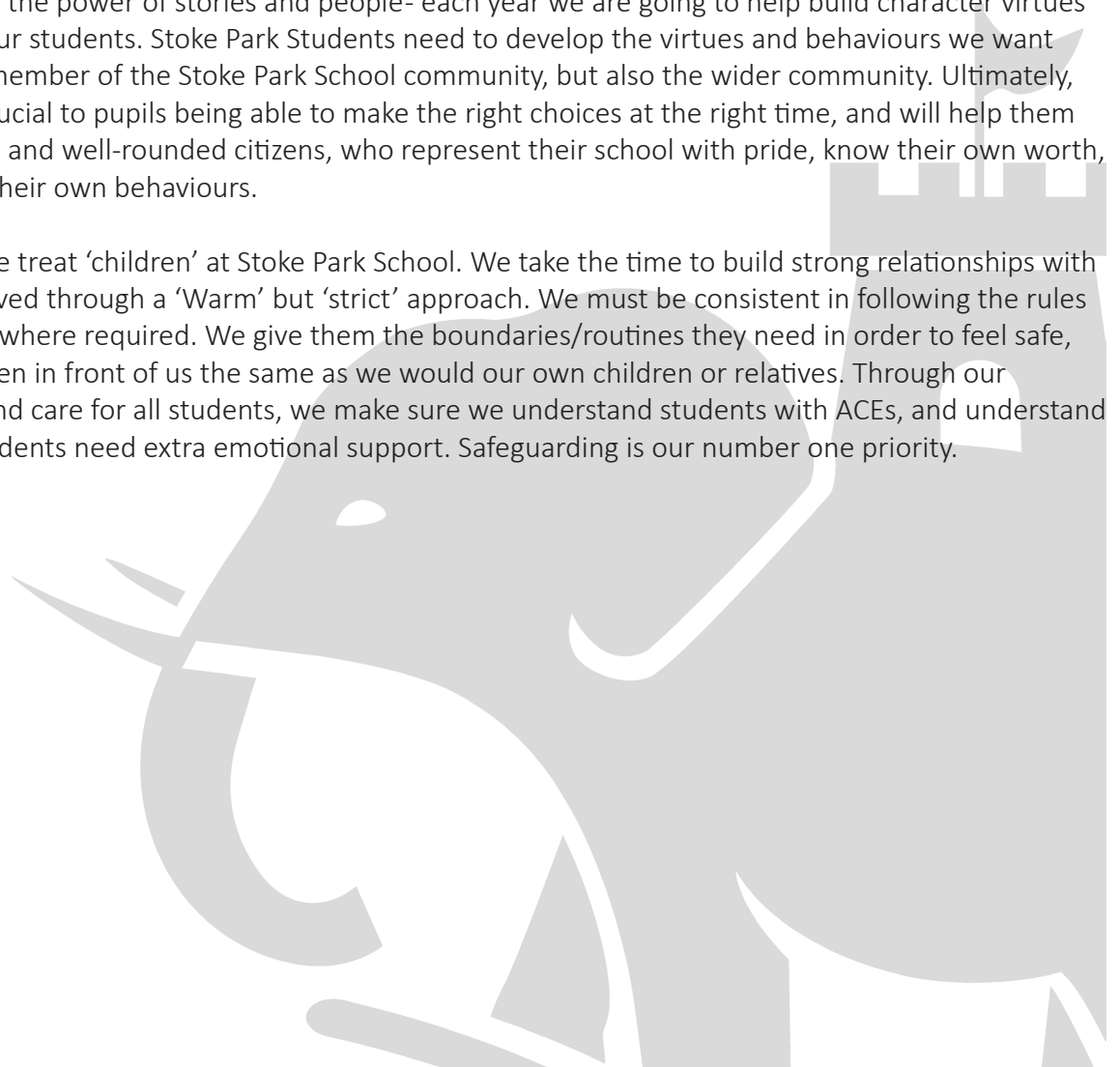
The cornerstones our Seven Year Journey are built upon are:

Culture: We live and breathe the belief that our students can be as successful as those who go to 'private schools'. We have to have the highest of aspirations for them. We have to work harder to overcome the barriers for them and teach them attributes beyond the curriculum. We model the attributes we want our students to have and when they get it wrong we model it again and again.

Competition: Stoke Park Students should be able to compete in whatever educational, professional or social setting they find themselves in when they leave school. We have to invest in their cultural capital. We have to develop their character education. They have to experience winning and losing/ failures and gains. They have to understand the 'behavioural codes' of society. They have to have the academic success to open the door.

Character: Through the power of stories and people- each year we are going to help build character virtues and instil them in our students. Stoke Park Students need to develop the virtues and behaviours we want them to have as a member of the Stoke Park School community, but also the wider community. Ultimately, these virtues are crucial to pupils being able to make the right choices at the right time, and will help them to grow into decent and well-rounded citizens, who represent their school with pride, know their own worth, and can reflect on their own behaviours.

Care: This is how we treat 'children' at Stoke Park School. We take the time to build strong relationships with our students, achieved through a 'Warm' but 'strict' approach. We must be consistent in following the rules but use judgement where required. We give them the boundaries/routines they need in order to feel safe, and treat the children in front of us the same as we would our own children or relatives. Through our Pastoral wrap-around care for all students, we make sure we understand students with ACEs, and understand that vulnerable students need extra emotional support. Safeguarding is our number one priority.



Year 7

The Orator

‘An Outstanding Transition From Primary to Secondary School’



At Stoke Park School, we recognise that the needs of our younger students are very different to our older students and the first year at secondary school is a critical year in any young person’s educational journey. Working in collaboration with President Kennedy School and The Futures Trust, we opened The Bridge at Stoke Park School in September 2019.

The Bridge at Stoke Park School provides our new year 7 students with their own ‘mini school’, a welcoming place where they will settle quickly and where the Bridge’s staff focus entirely on them, delivering outstanding care and accelerated academic progress.

The Bridge at Stoke Park School, is located in its own refurbished part of the building with its own play area and staff (The Bridge Team). Teachers visit students at The Bridge rather than Year 7 students having to make their way across school to lessons. The Bridge offers its own clubs and societies and the whole focus is to ensure our new students feel at home from day one, engage in positive experiences, make new friends and get the very best start at secondary school.

Year 7 students tend to experience a dip in academic performance on transfer to secondary school, The Bridge at Stoke Park School is consistently delivering accelerated academic progress year after year along with unrivalled pastoral care and transition experience.

BEING AN OUTSTANDING BRIDGE LEARNER MEANS...

BEING
PUNCTUAL

TAKING PRIDE
IN YOUR
UNIFORM

BEING IN THE
RIGHT PLACE
AT THE RIGHT
TIME

BEING
ORGANISED

BEING
RESPONSIBLE
FOR YOUR
LEARNING PREP

TAKING PRIDE
IN YOUR
LEARNING

Year 8

The Philosopher



Once students have completed their first year at Stoke Park School they move up to the Year 8 College called “The Gateway”. This is a bastion of academic excellence with a keen focus on, oracy, reading and communication skills in order to prepare students for the rigours of their new and exciting curriculum.

The Year 8 curriculum has been curated to ensure that all students receive the very best lessons and make exemplary progress in each subject. Teachers in The Gateway are experts in their curriculum area and use their wealth of skills to ensure that no student is left behind.

Oracy and communication skills are key to this progress, being able to astutely articulate opinions and ideas in whole class discussion and being able to understand the ‘why’ of their learning are all key factors to the continued academic success of the students.

We have a key motto in The Gateway, ‘no barriers’ and we ensure that this applies to each and every student. For students who may be struggling with the change of academic rigour in Year 8 we have a plethora of interventions in place to make sure they can make rapid progress. Ranging from ‘Lexonic’, an English Intervention to ‘Rockstar’ maths, students are consistently supported to ensure they achieve their very best.

The Gateway is dedicated to the needs of Year 8 whether they be academic or social there is a support network embedded in the life of The Gateway that is evident to all who are part of this incredible college.



The Gateway is a very special experience from the start of the day with Breakfast club to Prep that runs at break, lunch and after school, students will find that there is a constant network of support for them.

Year 8 students enjoy their own ‘Heart Space’ which is run by a member of the team, further embedding relationships with students and we also organise a variety of extracurricular activities ranging from being a school ambassador to joining the Fantasy Football League, there is something for everyone.

Students truly experience an exemplary curriculum, a wealth of support and a wide range of extra-curricular activities in The Gateway and these aspects combined make it an incredibly enriching learning environment

Year 9

The Revolutionary



Following the Bridge and the Gateway, students now build on the skills and knowledge they have learnt by exploring a range of challenging subjects in Year 9. All students will engage in a balanced curriculum, ensuring they have a broad overview of knowledge in all subjects. This allows all of our students to make their GCSE options during the course of the year with the best possible experience in all subject areas.

By Year 9, students will have now developed the communication skills required to engage in academic debates in lessons, whilst also leading their own learning as reflective learners. Embodying the year group culture of “The Revolutionary”, students will challenge one another’s ideas in lessons, and begin to question their previous ideas.



The pastoral team in Year 9 is also highly experienced in supporting students over the course of the year. One of the challenges students face is in deciding their GCSE options, but through high quality advice and support from tutors, alongside options evenings and presentations, students will be fully guided through the process to ensure they make their own, independent decisions.

In addition, students will engage in a thought-provoking PSHE and Careers curriculum during tutor time. As the Revolutionaries within the school, they will study their place within the community and world they live in, and develop ideas around how they can lead a positive change within it. Students learn about education pathways and careers throughout the year as part of the Year 9 tutor programme. Enrichment activities such as school events and visits further add to their understanding of their options beyond school.



Year 9 is the year where we encourage students to start thinking ahead to their future. Students will consider what they want to do in life, their ambitions and goals, as well as the world they want to grow up in. During such a key year, we ensure our students are supported in every way possible, both through exceptional teaching and a wrap-around pastoral team.

Year 10

The Inventor

The learning environment in Year 10 is supportive, yet challenging, with a sense that students and their teachers are on an educational journey together. This is the first year of their two-year KS4 journey. Students start preparing for their GCSE examinations in all subjects. The curriculum is as broad as possible to enable the students to make well informed decisions about their academic futures. There are three compulsory subjects, English Language and Literature, Mathematics and Science (Combined or triple). Students also select three more subjects from a range of 13. One of these choices must include History or Geography. All examinations will take place at the end of year 11. Students with specific learning needs are well supported. There is excellent provision provided by the SEND and inclusion team. Students for whom English is not their first language are supported by the schools EAL team. Many of these students go on to sit a GSCE in their home language.



Pastoral care is central to our ethos. Ensuring all students feel happy and confident as they progress through the key stage is our top priority. The Year 10 team consists of a Head of Year, Pastoral Leader and an experienced tutor team which constitutes the wrap around team. Collectively and in partnership with the Designated Safeguarding Lead, PSHE Lead, school counsellor and external agencies, an extensive PSHE and Wellbeing Programme is in place during registration. These sessions explore topical, age appropriate issues in the modern world. Through discussion, students develop their understanding of social skills, moral judgements, spiritual beliefs and cultural influences.

Underpinning all our pastoral care is our unwavering commitment to student safety. Through the establishment of the PRIDE Charter in school, we are always supporting our students to carry our key values with them. We are consistently focussed on how we can support our students in the wider world. Alongside this, we are continually educating our Year 10 students about equality and diversity, and utilising Student Ambassadors and Leaders to lead other year groups in the school in ensuring that Stoke Park is an establishment of anti-bullying.

Our enrichment activities provide the students with a flavour of the opportunities beyond the classroom. In the autumn term some of our students will take part in 'The Brilliant Club' which is an opportunity for students to work with Academic professionals in a research based project, supporting them to become independent learners whilst developing their skills to go on to higher education in the future. In Year 10 we place a big emphasis on stewardship in our local community and hold various charity events, fundraisers and competitions to help support others in the local community and throughout the City. These include collections for the local Foodbank, raising money for charity through a variety of competitions and working with external charities to help make a difference. We believe this helps support the moral development of our students in order to become well-rounded citizens. Students have a supportive and robust careers programme that tailors to preferences of our students, in order to help support Year 10 students in their career and future choices. This is delivered through various means, including virtual speakers, webinars and videos recorded by professionals from various industries specifically for Stoke Park students.

Year 11

The Architect

We continue to offer a board and balanced curriculum in Year 11. Our teachers are experts in and passionate about their subjects, and they teach the curriculum with depth and rigour. In order to further support students with their skills and knowledge, a rigorous intervention and support programme is in place, utilising tutor times and after school sessions to revise key concepts and provide more individualised support to every student.

Students are also assigned an Assertive Mentor who is dedicated to ensure that everyone feels supported in academic and personal matters. This relationship is often cited by our students as one of their most memorable experiences. This mentor not only supports with the academic learning required for GCSEs, but can also begin to help students develop their ideas about their hopes and ambitions beyond this year.



At the heart of our education at Stoke Park is the understanding that students flourish when they feel valued for who they uniquely are. The Year 11 team consists of a Head of Year, Pastoral Leader and an experienced tutor team which constitutes the wrap around team. Collectively and in partnership with the Designated Safeguarding Lead, PSHE Lead, school counsellor and external agencies, an extensive PSHE and Wellbeing Programme is in place during registration. These sessions explore topical, age-appropriate issues in the modern world. Through discussion, students develop their understanding of social skills, moral judgements, spiritual beliefs and cultural influences.

Underpinning all our pastoral care is our unwavering commitment to student safety. Through the establishment of the PRIDE Charter in school, we are supporting our students to carry our key values with them at all times. We are consistently focussed on how we can support our students in the wider world. Alongside this, we are continually educating our Year 11 students about equality and diversity, and utilising Student Ambassadors and Leaders to lead other year groups in the school in ensuring that Stoke Park is an establishment of anti-bullying. In doing so, Year 11 are at the very heart of making our school a safe and welcoming place to be.

The guidance we provide about options, careers and apprenticeships plays an invaluable part in the development and fulfilment of our students' academic potential and aspirations. All students will have an opportunity to meet with the school career advisor to explore and make informed decisions about their future pathway. We are committed to providing an impartial, extensive and outstanding careers education to all students.

We have also introduced the Prefect Role this year, looking for students who wish to help lead the school in its continual progress and development. This role is available to all students to help encourage them to promote themselves in the application, whilst also providing the opportunity for students to be the bringers of change in the school they are in every day.

Post 16

The Scholar



We are delighted to welcome our current students as well as students from numerous other schools into Stoke Park Post 16. We provide an aspirational environment in which students are able to flourish.

We are a thriving, friendly and supportive community. Our students have a wide variety of different aspirations. We pride ourselves on the support we offer each individual, to maximise their potential as well as develop their self-confidence and belief. The majority of our students aspire to study at university. Their chosen degree courses are wide ranging: including areas such as law, medicine, the humanities and engineering. Students are also supported to secure positions in employment or high level apprenticeships.

It is with pride, every year, that we celebrate the success of our Post 16 students at Stoke Park. We look forward to their future successes and to welcoming them back to inspire future generations.



Stoke Park School

Uniform

Essential Items:

- Stoke Park Blazer with correct school logo.
- Plain white cotton shirt with collar.
- School tie.
- Plain black trousers. Straight cut cotton/polyester /viscose. **NOT ELASTANE/LYCRA MATERIAL, BOOTCUT, SKINNY OR CROPPED. TROUSERS MUST COVER THE ANKLE.**
- A plain black knee length skirt, cotton/polyester /viscose. **NOT ELASTINE/LYCRA MATERIAL.**
- Plain dark coloured socks or 60 denier black tights. **SOCKS ARE NOT TO BE KNEEHIGH/OVER THE KNEE.**
- Plain black formal leather shoes. **NOT BOOTS, TRAINERS OR TRIANER STYLE. THERE ARE TO BE NO METAL EMBELLISHMENTS/LABELS OR BRANDS.**
- Plain black non branded coat. **NOT A HOODIE, SPORTING OR TRACKSUIT TOP.**
- School bag suitable for carrying exercise books and equipment.

Optional:

- Black V-neck school jumper with school logo.
- Plain black religious headwear (headscarves that are no longer than the shoulder and turbans)

We do not allow:

- More than one item of Jewellery. Earrings can be worn in the ear lobes only and must be small studs.
- Necklaces.
- Facial piercings of any kind – this includes tongue. If students have multiple piercings, they will be asked to remove jewellery, this includes clear plastic jewellery.
- Make up, nail varnish, acrylic nails, fake eyelashes/eyelash extensions.
- Extreme hairstyles and brightly coloured hair, this includes hair extensions. Hair must be natural in colour and style.
- T – Shirts visible under shirts.
- Baseball caps, hats, sunglasses.
- Sovereign rings

You will be asked to hand the items above over to your year team if you wear them to school. Stoke Park do not accept responsibility for any items that are lost or stolen.

PE Kit

- Stoke Park quarter zip top or rugby shirt.
- Stoke Park polo shirt.
- Plain black tracksuit bottoms or shorts. NO LOGOS
- Plain long or short, black, or white socks. NO LOGOS OR PATTERNS.
- Trainers. NOT PUMPS/CONVERSE OR SIMILAR.
- Gum shield.
- Shin Pads.
- Studded football/rugby boots. NOT ASTROS



All uniform items are available from:



Cat Ballou Originals Ltd

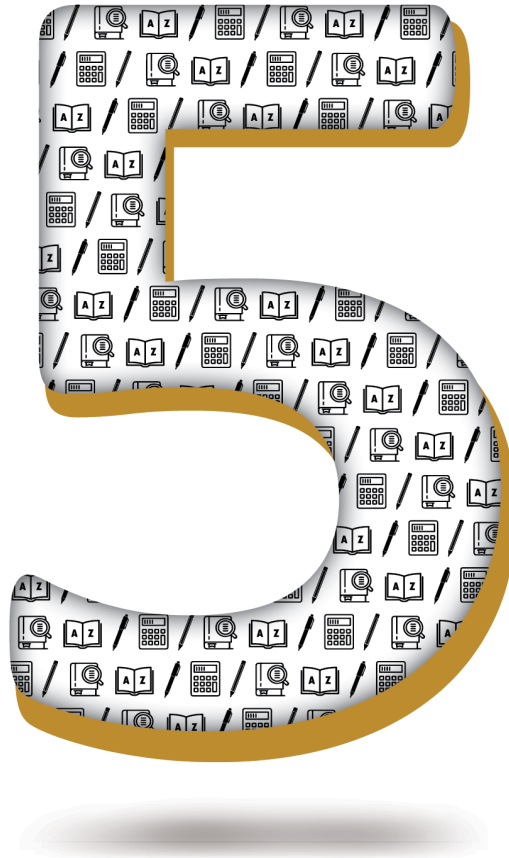
1-3 The Burges, Coventry, CV1 1HN

Tel: 02476 555499



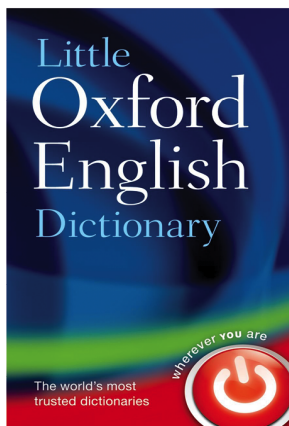
STOKE PARK
— SCHOOL —

Give
me



You must have the following
5 items on you at all times...

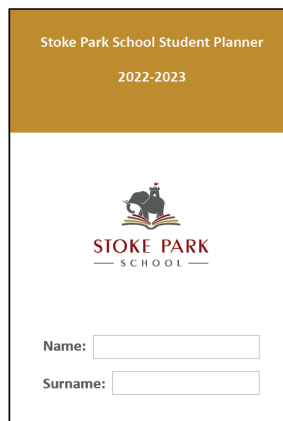
A
Dictionary



A
Pencil Pen



A
Planner



A
Scientific Calculator



ACHIEVE, ENJOY AND EXCEL IN PE



We have a variety of sporting opportunities you can sign up to on a termly basis



We also participate in regular local fixtures and national tournaments. In addition to this we have lots of Staff vs Students competitions and tournaments, regular inter-form competitions and sports days for every year group.



Stoke Park School

Family Support Centre



STOKE PARK
FAMILY SUPPORT CENTRE

Stoke Park Family Support Centre will provide services to help meet the needs of pupils, their families and the wider community. As a Family Support Centre, we want to promote the idea of an open access centre which is dedicated to students, their families and the rest of the community, where both processes complement and develop one another to enrich and foster change in school and our surrounding neighbourhoods for the better. Our aim is to enhance partnership between school and the community, offering information and support on a range of topics.

**ENERGY
POVERTY**

**MENTAL
HEALTH AND
WELLBEING**

**FOOD
BANKS**

**SECOND
HAND
UNIFORM
BANK**

**SANITARY
PRODUCTS**

**PARENTING
PROGRAMMES**

**COST OF LIVING
SUPPORT AND
GUIDANCE**

**CITIZEN ADVICE
BUREAUX**

**FORM
FILLING**

Along with so much more. If you would like support with any of the above or you have another query regarding the Family Support Centre, please contact Mrs Deely – Family Support Centre Co-Ordinator 02476450215 or via email jdeely@stokepark.coventry.sch.uk for further information.